



# FLI1 (ABT-FLI1) mouse mAb

<b>Catalog No</b>	YP-Ab-15163
<b>Isotype</b>	IgG
<b>Reactivity</b>	Human
<b>Applications</b>	IHC;IF
<b>Gene Name</b>	FLI1
<b>Protein Name</b>	Friend leukemia integration 1 transcription factor (Proto-oncogene Fli-1) (Transcription factor ERGB)
<b>Immunogen</b>	Synthesized peptide derived from human FLI1
<b>Specificity</b>	This antibody detects endogenous levels of human FLI1. Heat-induced epitope retrieval (HIER) TRIS-EDTA of pH8.0 was highly recommended as antigen repair method in paraffin section
<b>Formulation</b>	Liquid in PBS containing 50% glycerol, 0.5% BSA and 0.02% sodium azide.
<b>Source</b>	Mouse, Monoclonal/IgG1, Kappa
<b>Purification</b>	The antibody was affinity-purified from mouse ascites by affinity-chromatography using specific immunogen.
<b>Dilution</b>	IHC-p 1:100-500, WB 1:500-2000. IF 1:50-200
<b>Concentration</b>	1 mg/ml
<b>Purity</b>	≥90%
<b>Storage Stability</b>	-20°C/1 year
<b>Synonyms</b>	
<b>Observed Band</b>	
<b>Cell Pathway</b>	Nucleus .
<b>Tissue Specificity</b>	Blood,Bone marrow,Lymph,Placenta,
<b>Function</b>	disease:A chromosomal aberration involving FLI1 is a cause of Ewing sarcoma [MIM:133450]. Translocation t(11;22)(q24;q12) with EWS.,function:Sequence-specific transcriptional activator. Recognizes the DNA sequence 5'-C[CA]GGAAGT-3'.,miscellaneous:Located on a fragment of chromosome 11 flanked on the centromeric side by the acute lymphoblastic leukemia-associated t(4;11)(q21;q23) translocation breakpoint and on the telomeric side by the Ewing- and neuroepithelioma-associated t(11;22)(q24;q12) breakpoint.,similarity:Belongs to the ETS family.,similarity:Contains 1 ETS DNA-binding domain.,similarity:Contains 1 PNT (pointed) domain.,subunit:Can form homodimers or heterodimers with ETV6/TEL1.,
<b>Background</b>	This gene encodes a transcription factor containing an ETS DNA-binding domain. The gene can undergo a t(11;22)(q24;q12) translocation with the Ewing sarcoma gene on chromosome 22, which results in a fusion gene that is present in the majority of Ewing sarcoma cases. An acute lymphoblastic



leukemia-associated t(4;11)(q21;q23) translocation involving this gene has also been identified. Alternative splicing results in multiple transcript variants. [provided by RefSeq, Aug 2012],

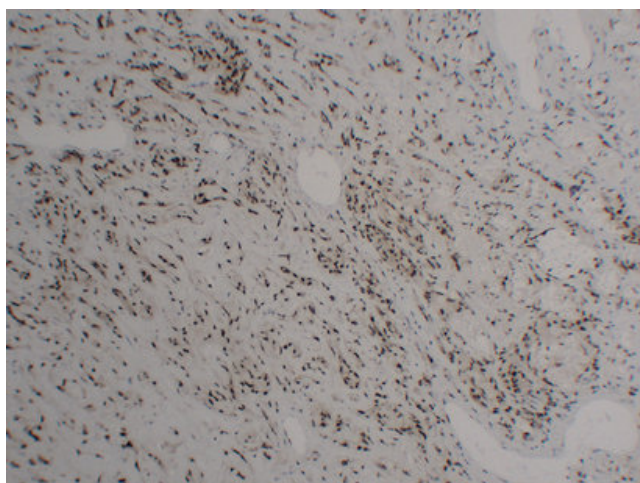
#### matters needing attention

Avoid repeated freezing and thawing!

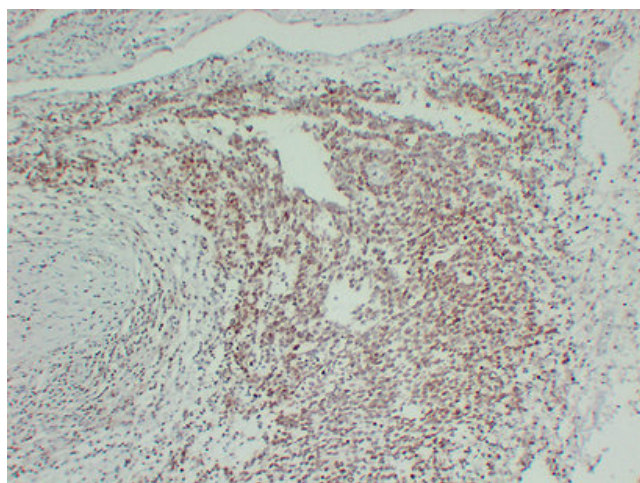
#### Usage suggestions

This product can be used in immunological reaction related experiments. For more information, please consult technical personnel.

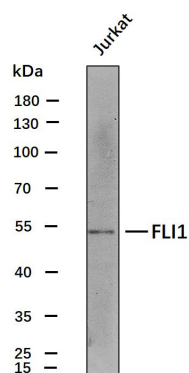
## Products Images



Immunohistochemical analysis of paraffin-embedded Hemangioendothelioma. 1, Antibody was diluted at 1:200(4° overnight). 2, Tris-EDTA,pH8.0 was used for antigen retrieval. 3,Secondary antibody was diluted at 1:200(room temperature, 30min).



Immunohistochemical analysis of paraffin-embedded PNET. 1, Antibody was diluted at 1:200(4° overnight). 2, Tris-EDTA,pH8.0 was used for antigen retrieval. 3,Secondary antibody was diluted at 1:200(room temperature, 30min).



Whole cell lysates of Jurkat (30ug) were separated by 10% SDS-PAGE, and the membrane was blotted with FLI1 antibody. The HRP-conjugated anti-Mouse IgG antibody was used to detect the antibody.

Predicted band size: 51kDa

Western blot analysis of FLI1Antibody at 1:1000 dilution.